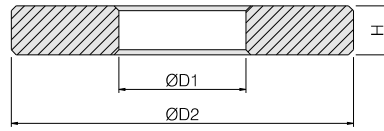


B1208 - Plain Washer

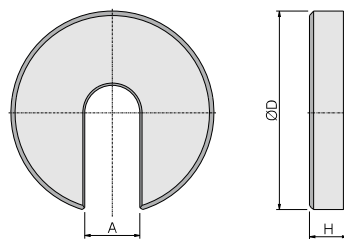
- ▶ Tempered steel
- ▶ Blackened



Part No.	For suitable screw	ØD1	ØD2	H	Weight (Kg)
B1208-M8	M8	8,4	23	4	0.011
B1208-M10	M10	10,5	28	4	0.016
B1208-M12	M12	13	35	5	0.033
B1208-M14	M14	15	40	5	0.041
B1208-M16	M16	17	45	6	0.064
B1208-M18	M18	19	45	6	0.064
B1208-M20	M20	21	50	6	0.075
B1208-M22	M22	23	50	8	0.092
B1208-M24	M24	25	50	8	0.172
B1208-M30	M30	31	68	10	0.226

B1209 - C Washer

- ▶ Case hardened
- ▶ Ground, Blackened



Part No.	For suitable screw	ØD	A	H	Weight (Kg)
B1209-M10	M10	42	10,5	9	0.07
B1209-M12	M12	48	13	9	0.1
B1209-M14	M14	63	15	11	0.21
B1209-M16	M16	63	17	12	0.21
B1209-M20	M20	78	21	14	0.34
B1209-M24	M24	102	25	16	0.6
B1209-M30	M30	102	31	18	0.65